



Aero Energy

LM6-208 - V.3.2

Borescope Inspection Report

November 18, 2023

For

OMPA

Oklahoma Municipal Power Authority

Ponca City Municipal Steam Plant

1420 North Union Street

Ponca City, OK 74601

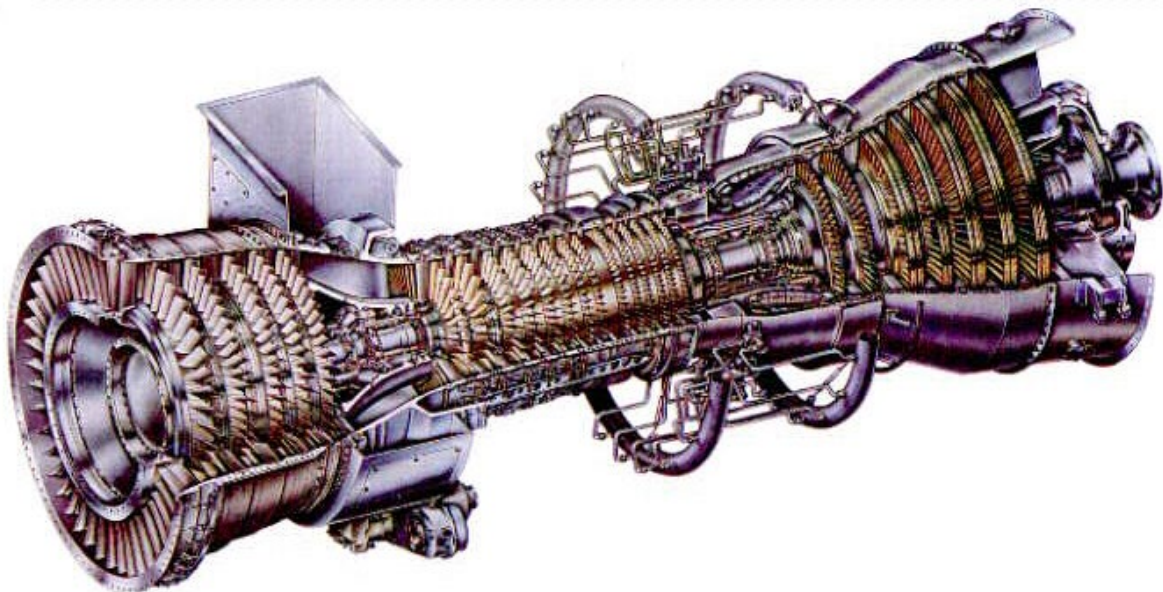
Unit 3

ESN 191-472

Under

GE Oracle Project 7319609

Customer Representative: David Huff
GE Field Service Representative: Mel Shifferaw



General Electric Company Proprietary Information:

The information contained in this document is General Electric proprietary information and is disclosed in confidence. It is the property of General Electric and shall not be used, disclosed to others, or reproduced without the express written consent of General Electric. If consent is given for reproduction in whole or in part, this notice and the notice set forth on each page of this document shall appear in any such reproduction in whole or in part. The information contained in this document also may be controlled by the U.S. Export control laws. Unauthorized export or import is prohibited.

All technical recommendations and information contained in this report are based on GE manuals that have been developed and approved for use with GE engines and parts that have been operated and maintained in accordance with GE technical documentation and recommendations.

GE has no technical knowledge of, nor obligation for, non-GE-approved parts and repairs. Accordingly, this report is not intended to apply to non-GE-approved parts and repairs, nor to any parts that may be directly or indirectly affected by non-GE-approved parts and repairs.



SUMMARY

The purpose of this visit was to perform a Borescope inspection after a hard stop **due to compressor stall alarm due to PS3 line tube broke off.**

This Borescope inspection was completed in reference to WP 4015 00.

Components found NOT serviceable: Last periodic borescope inspection conducted on August 2023 and all HPC compressor Blade distress observed in this inspection was not observed.

Detail Findings:	<ul style="list-style-type: none"> HPC Stg 6 leading edge has one dented blade. HPC Stg 7 leading edge has one dented blade. HPC Stg 8 trialing edge has one dented blade and another one with minor dent. HPC stg 8 trialing edge has one blade missing material from the tip. HPC Stg 10 Trialing edge has one blade missing material. HPC Stg 11 leading edge Has three blades with minor nick. HPC Stg 11 leading edge has three dented blades. HPC Stg 13 leading edge has one Dented blade. HPC Stg 14 leading edge has one dented blade.
PAC Number (if available):	AERO-20231118-0243
Notifications (SM/CPM/PM/ENGR/SL or FSRM):	Eric Bergeron

All the finding on HPT rotor was documented on last BSI inspection and engine was under watch for oxidation and erosion.

Detail Findings:	<ul style="list-style-type: none"> HPT stg 1 nozzle has excessive erosion and oxidation. HPT Stg 1 blade leading edge has excessive erosion and oxidation. HPT Stg 1 platform missing material and excessive erosion and oxidation. HPT Stg 2 Blade leading edge has one blade dented and oxidized. HPT stg 2 blade has excessive oxidation on tip of the blades. HPT stg 2 plat form has oxidation.
PAC Number (if available):	AERO-20231118-0243
Notifications (SM/CPM/PM/ENGR/SL or FSRM):	Eric Bergeron

Outage Data:

Engine Data:

ESN	191-472	Engine Fired Hours		Package Hours	
Model	LM6000PC	Engine Fired starts		Package Fired Starts	

Maintenance Data:

WP, SB, SL, PB, PL Performed	Revision/manual reference	Date completed	Comments
WP 4015 00	GEK 105059 (June 15, 2008)	11/18/2023	Unserviceable

GE Proprietary Information Subject to the restrictions on the cover or first page



DETAILS AND DATA

Purpose of visit:

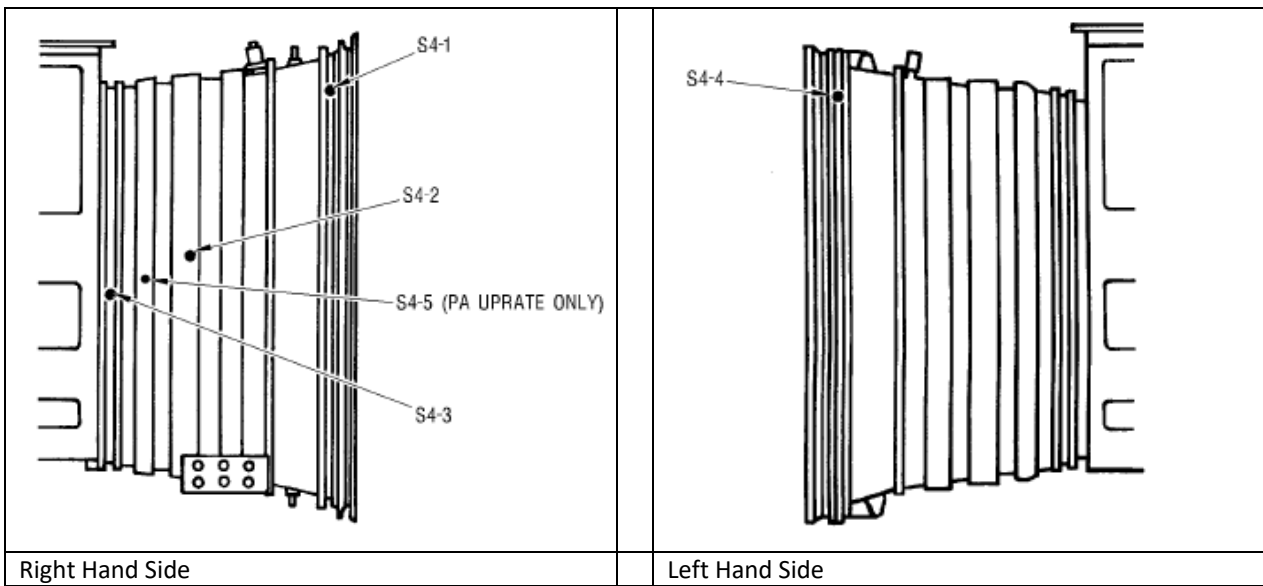
The purpose of this visit was to perform a Borescope Inspection IRW WP 4015 00.

Work performed:

A borescope of the engine was performed using and an Everest VIT flexscope and a turning tool.

WP 4015 00 Borescope Inspection:

Low Pressure Compressor BSI Ports



Low Pressure Compressor	
Inspection Area	Comments
<input type="checkbox"/> Inspect stages 0 through 4 blades and vanes for cracks, nicks, burrs, tears, curl, missing material, dents, scratches, pits.	Serviceable
<input type="checkbox"/> VIGV flaps from inlet plenum or BSI ports S4-1 & S4-4.	Serviceable
<input type="checkbox"/> Stage 0 Blades & Vanes, BSI ports S4-1 & S4-4.	Serviceable
<input type="checkbox"/> Stage 1 Blades & Vanes, BSI ports S4-2.	Serviceable
<input type="checkbox"/> Stage 2 Blades & Vanes, BSI ports S4-2 & S4-5.	Serviceable
<input type="checkbox"/> Stage 3 Blades & Vanes, BSI ports S4-3 & S4-5	Serviceable
<input type="checkbox"/> Stage 4 Blades & Vanes, BSI ports S4-3.	Serviceable
<input type="checkbox"/> Inspect for airfoil erosion, corrosion or deposits.	Serviceable
<input type="checkbox"/> Use flexscope to inspect visible portion of stage 0-3 vane inner bushing for cracking, protrusion into air stream, or missing pieces.	Serviceable
<input type="checkbox"/> Use flexscope to inspect stage 4 vane inner bushing for cracking, protrusion into air stream, or missing pieces.	Serviceable



LPC_Stage1_TE_001.JPG

Section	LPC
Stage	Stage1_TE
Defect	NO DEFECTS - SERVICEABLE
Comments	



LPC_Stage1_TE_002.JPG

Section	LPC
Stage	Stage1_TE
Defect	NO DEFECTS - SERVICEABLE
Comments	



LPC_Stage2_LE_001.JPG

Section	LPC
Stage	Stage2_LE
Defect	NO DEFECTS - SERVICEABLE
Comments	



LPC_Stage2_LE_002.JPG

Section	LPC
Stage	Stage2_LE
Defect	NO DEFECTS - SERVICEABLE
Comments	



LPC_Stage2_TE_001.JPG

Section	LPC
Stage	Stage2_TE
Defect	NO DEFECTS - SERVICEABLE
Comments	



LPC_Stage2_TE_002.JPG

Section	LPC
Stage	Stage2_TE
Defect	NO DEFECTS - SERVICEABLE
Comments	



LPC_Stage3_LE_001.JPG

Section	LPC
Stage	Stage3_LE
Defect	NO DEFECTS - SERVICEABLE
Comments	



LPC_Stage3_LE_002.JPG

Section	LPC
Stage	Stage3_LE
Defect	NO DEFECTS - SERVICEABLE
Comments	



LPC_Stage3_TE_001.JPG

Section	LPC
Stage	Stage3_TE
Defect	NO DEFECTS - SERVICEABLE
Comments	



LPC_Stage4_LE_001.JPG

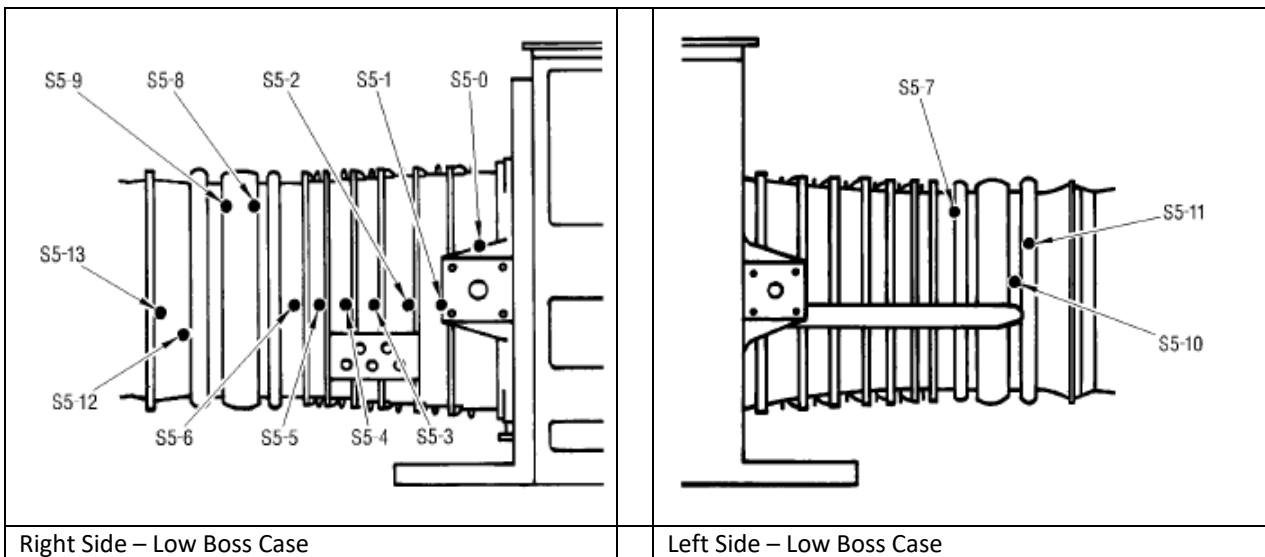
Section	LPC
Stage	Stage4_LE
Defect	NO DEFECTS - SERVICEABLE
Comments	

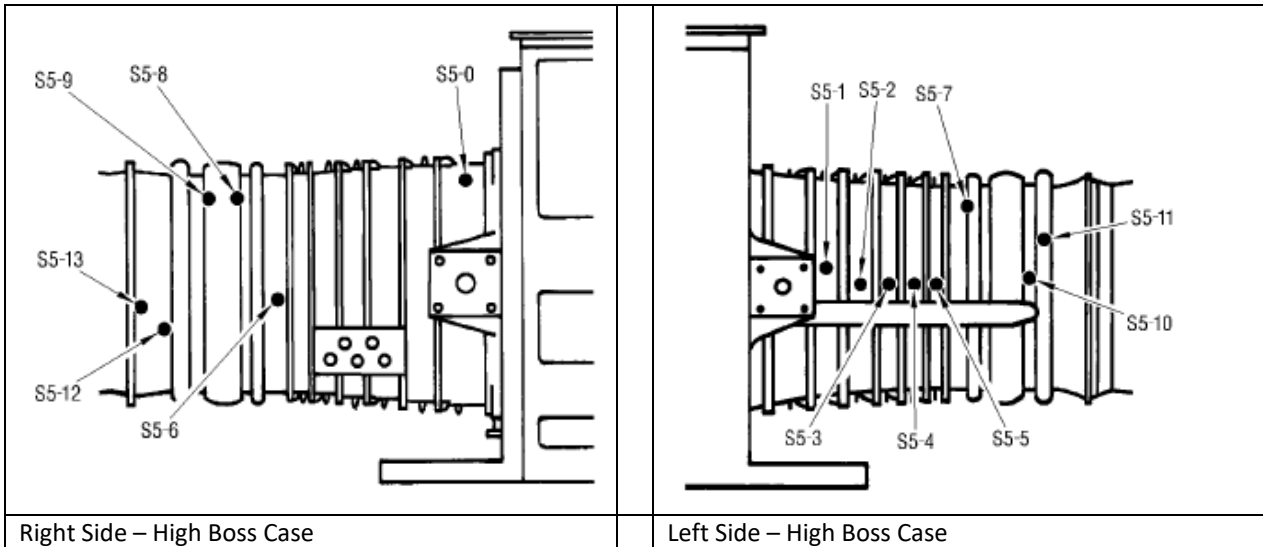


LPC_Stage4_LE_002.JPG

Section	LPC
Stage	Stage4_LE
Defect	NO DEFECTS - SERVICEABLE
Comments	

High Pressure Compressor BSI Ports





High Pressure Compressor	
Inspection Area	Comments
<input type="checkbox"/> Inspect stages 1 through 14 blades for cracks, nicks, tears, burrs, dents, missing material, evidence of tip clang, curl or deformation. <i>* BSI Port are inside manifold</i>	Missing material from HPC blade on stg 8 TE and stg 11 TE.
<input type="checkbox"/> IGV from BSI ports S5-0	Missing material from HPC blade on stg 8 TE and stg 11 TE.
<input type="checkbox"/> Stage 1 Blades (Qty 36) & Vanes, BSI ports S5-0 & S5-1.	Missing material from HPC blade on stg 8 TE and stg 11 TE.
<input type="checkbox"/> Stage 2 Blades (Qty 26) & Vanes, BSI ports S5-1 & S5-2.	Missing material from HPC blade on stg 8 TE and stg 11 TE.
<input type="checkbox"/> Stage 3 Blades (Qty 42) & Vanes, BSI ports S5-2 & S5-3.	Missing material from HPC blade on stg 8 TE and stg 11 TE.
<input type="checkbox"/> Stage 4 Blades (Qty 45) & Vanes, BSI ports S5-3 & S5-4.	Missing material from HPC blade on stg 8 TE and stg 11 TE.
<input type="checkbox"/> Stage 5 Blades (Qty 48) & Vanes, BSI ports S5-4 & S5-5.	Missing material from HPC blade on stg 8 TE and stg 11 TE.
<input type="checkbox"/> Stage 6 Blades (Qty 54) & Vanes, BSI ports S5-5 & S5-6.	Missing material from HPC blade on stg 8 TE and stg 11 TE.
<input type="checkbox"/> Stage 7 Blades (Qty 56) & Vanes, BSI ports S5-6 & S5-7*.	Missing material from HPC blade on stg 8 TE and stg 11 TE.
<input type="checkbox"/> Stage 8 Blades (Qty 64) & Vanes, BSI ports S5-7* & S5-8*.	Missing material from HPC blade on stg 8 TE and stg 11 TE.
<input type="checkbox"/> Stage 9 Blades (Qty 66) & Vanes, BSI ports S5-8* & S5-9*.	Missing material from HPC blade on stg 8 TE and stg 11 TE.

GE Proprietary Information Subject to the restrictions on the cover or first page



<input type="checkbox"/> Stage 10 Blades (Qty 66) & Vanes, BSI ports S5-9* & S5-10.	Missing material from HPC blade on stg 8 TE and stg 11 TE.
<input type="checkbox"/> Stage 11 Blades (Qty 76) & Vanes, BSI ports S5-10 & S5-11*.	Missing material from HPC blade on stg 8 TE and stg 11 TE.
<input type="checkbox"/> Stage 12 Blades (Qty 76) & Vanes, BSI ports S5-11* & S5-12.	Missing material from HPC blade on stg 8 TE and stg 11 TE.
<input type="checkbox"/> Stage 13 Blades (Qty 76) & Vanes, BSI ports S5-12 & S5-13.	Missing material from HPC blade on stg 8 TE and stg 11 TE.
<input type="checkbox"/> Stage 14 Blades (Qty 76) & Vanes, BSI ports S5-13	Missing material from HPC blade on stg 8 TE and stg 11 TE.
<input type="checkbox"/> Inspect the stage 1 mid-span shroud interlock wear, shingling, a gap or a missing pad.	Missing material from HPC blade on stg 8 TE and stg 11 TE.
<input type="checkbox"/> Inspect for erosion, corrosion or deposits.	Missing material from HPC blade on stg 8 TE and stg 11 TE.
<input type="checkbox"/> Inspect for platform shingling, bowing, distortion or cracks	Missing material from HPC blade on stg 8 TE and stg 11 TE.



Section	HPC1-7
Stage	Stage1
Component	LE
Defect	NO DEFECTS - SERVICEABLE
Comments	



Section	HPC1-7
Stage	Stage1
Component	TE
Defect	NO DEFECTS - SERVICEABLE
Comments	



Section	HPC1-7
Stage	Stage1
Component	TE
Defect	NO DEFECTS - SERVICEABLE
Comments	



Section	HPC1-7
Stage	Stage1
Component	Weep hole
Defect	NO DEFECTS - SERVICEABLE
Comments	Dry



Section	HPC1-7
Stage	Stage1
Component	TE
Defect	NO DEFECTS - SERVICEABLE
Comments	



Section	HPC1-7
Stage	Stage2
Component	LE
Defect	NO DEFECTS - SERVICEABLE
Comments	



Section	HPC1-7
Stage	Stage2
Component	LE
Defect	NO DEFECTS - SERVICEABLE
Comments	



Section	HPC1-7
Stage	Stage2
Component	TE
Defect	NO DEFECTS - SERVICEABLE
Comments	



Section	HPC1-7
Stage	Stage2
Component	TE
Defect	NO DEFECTS - SERVICEABLE
Comments	



Section	HPC1-7
Stage	Stage3
Component	LE
Defect	NO DEFECTS - SERVICEABLE
Comments	



Section	HPC1-7
Stage	Stage3
Component	TE
Defect	NO DEFECTS - SERVICEABLE
Comments	



Section	HPC1-7
Stage	Stage3
Component	TE
Defect	NO DEFECTS - SERVICEABLE
Comments	



Section	HPC1-7
Stage	Stage4
Component	LE
Defect	NO DEFECTS - SERVICEABLE
Comments	



Section	HPC1-7
Stage	Stage4
Component	LE
Defect	NO DEFECTS - SERVICEABLE
Comments	



Section	HPC1-7
Stage	Stage4
Component	TE
Defect	NO DEFECTS - SERVICEABLE
Comments	



Section	HPC1-7
Stage	Stage4
Component	TE
Defect	NO DEFECTS - SERVICEABLE
Comments	



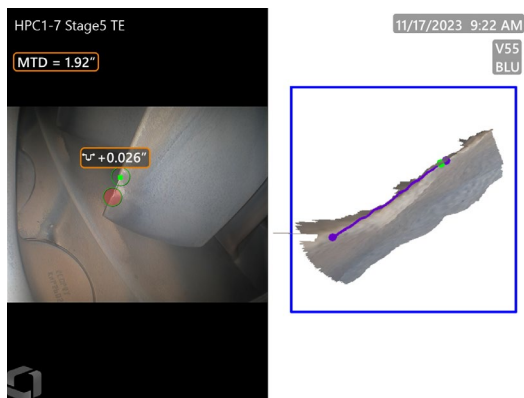
Section	HPC1-7
Stage	Stage6
Component	LE
Defect	Dent
Comments	



HPC1-7_Stage6_TE_002.JPG



HPC1-7_Stage7_LE_002.JPG

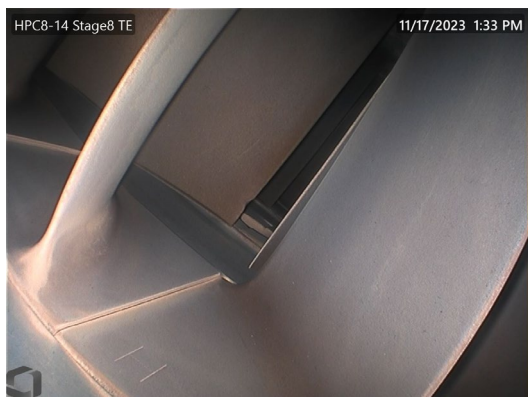


Section	HPC1-7
Stage	Stage6
Component	LE
Defect	
Comments	



HPC8-14_Stage8_TE_001.JPG

Section	HPC8-14
Stage	Stage8
Component	TE
Defect	DENT
Comments	



HPC8-14_Stage8_TE_002.JPG

Section	HPC8-14
Stage	Stage8
Component	TE
Defect	DENT
Comments	



HPC8-14_Stage8_TE_003.JPG

Section	HPC8-14
Stage	Stage8
Component	TE
Defect	TEAR
Comments	



HPC8-14_Stage8_TE_004.JPG

Section	HPC8-14
Stage	Stage8
Component	TE
Defect	DENT
Comments	



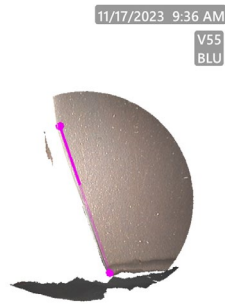
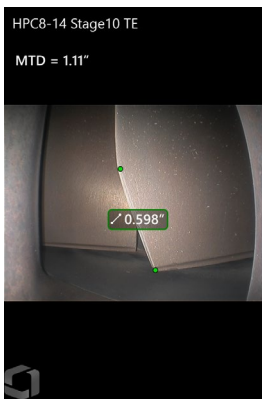
HPC8-14_Stage8_TE_005.JPG

Section	HPC8-14
Stage	Stage8
Component	TE
Defect	TEAR
Comments	

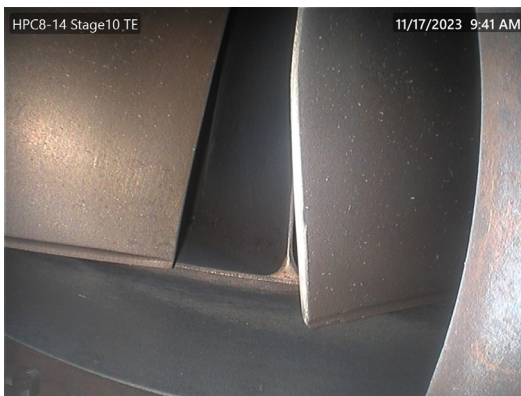


HPC8-14_Stage9_LE_001.JPG

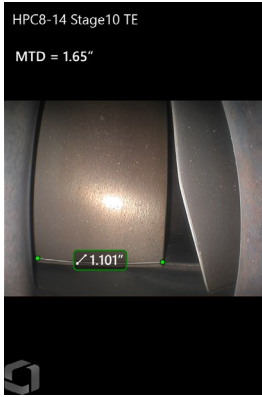
Section	HPC8-14
Stage	Stage9
Component	LE
Defect	NO DEFECTS - SERVICEABLE
Comments	



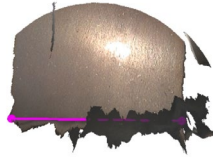
Section	HPC8-14
Stage	Stage10
Component	TE
Defect	Missing material from tip
Comments	



Section	HPC8-14
Stage	Stage10
Component	TE
Defect	Missing material from tip
Comments	



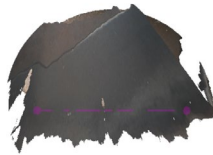
11/17/2023 9:43 AM
V55
BLU



Section	HPC8-14
Stage	Stage10
Component	TE
Defect	Normal Blade measurement for comparison
Comments	



11/17/2023 9:44 AM
V55
BLU



Section	HPC8-14
Stage	Stage10
Component	TE
Defect	Missing material measurement for comparison
Comments	



11/17/2023 11:14 AM

Section	HPC8-14
Stage	Stage11
Component	LE
Defect	Minor nick
Comments	

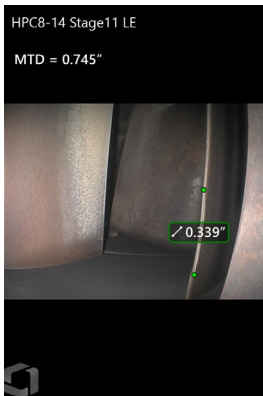


Section	HPC8-14
Stage	Stage11
Component	LE
Defect	
Comments	





Section	HPC8-14
Stage	Stage11
Component	LE
Defect	
Comments	





HPC8-14_Stage12_TE_001.JPG

Section	HPC8-14
Stage	Stage12
Component	TE
Defect	NO DEFECTS - SERVICEABLE
Comments	



HPC8-14_Stage12_TE_002.JPG

Section	HPC8-14
Stage	Stage12
Component	TE
Defect	DEPOSIT
Comments	



HPC8-14_Stage13_LE_001.JPG

Section	HPC8-14
Stage	Stage13
Component	LE
Defect	DENT
Comments	



HPC8-14_Stage13_LE_002.JPG

Section	HPC8-14
Stage	Stage13
Component	LE
Defect	NO DEFECTS - SERVICEABLE
Comments	



HPC8-14_Stage13_LE_003.JPG

Section	HPC8-14
Stage	Stage13
Component	LE
Defect	NO DEFECTS - SERVICEABLE
Comments	



HPC8-14_Stage13_TE_001.JPG

Section	HPC8-14
Stage	Stage13
Component	TE
Defect	NO DEFECTS - SERVICEABLE
Comments	



HPC8-14_Stage13_TE_002.JPG

Section	HPC8-14
Stage	Stage13
Component	TE
Defect	NO DEFECTS - SERVICEABLE
Comments	



HPC8-14_Stage14_LE_001.JPG

Section	HPC8-14
Stage	Stage14
Component	LE
Defect	DENT
Comments	



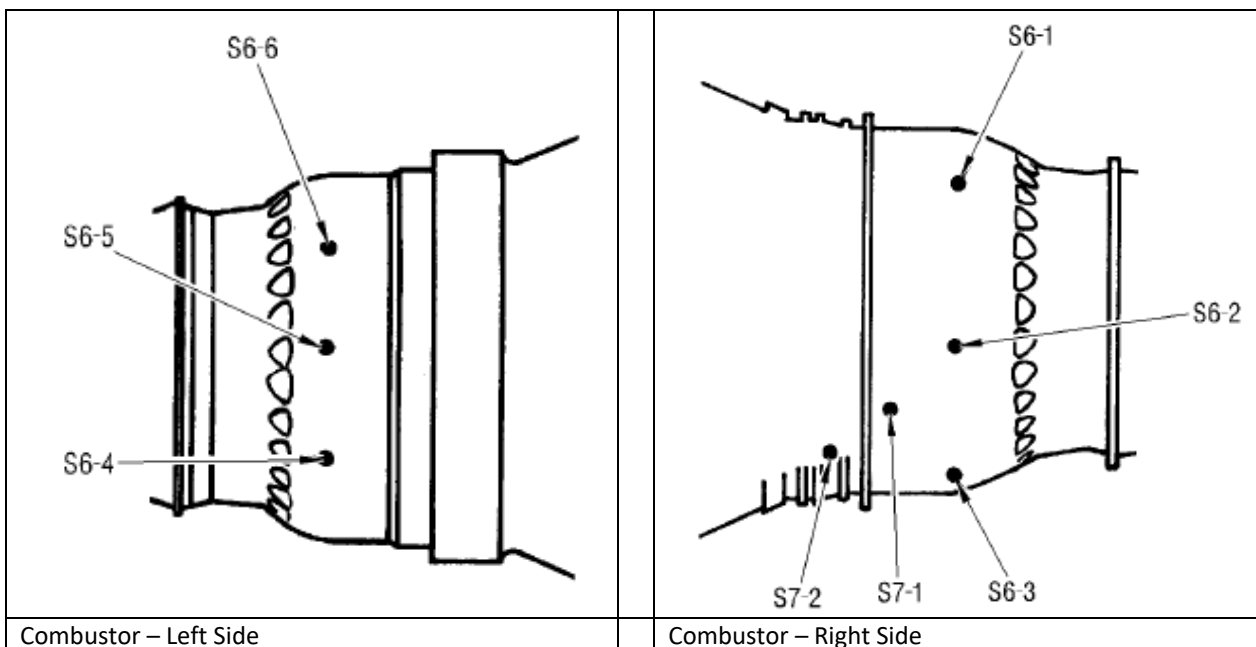
HPC8-14_Stage14_LE_002.JPG

Section	HPC8-14
Stage	Stage14
Component	LE
Defect	NO DEFECTS - SERVICEABLE
Comments	



Section	HPC8-14
Stage	OGV
Component	TE
Defect	NO DEFECTS - SERVICEABLE
Comments	

Combustor and HPT Borescope Ports



Combustor	
Inspection Area	Comments
<input type="checkbox"/> Inspect combustor and 1 st stage HPTN Leading Edge from all CRF BSI ports S6-1 to S6-6 (or with flex scope) for burning, cracks, erosion, discoloration, wear and missing metal.	Serviceable
<input type="checkbox"/> Venturi's	Serviceable
<input type="checkbox"/> Swirler Cups	Serviceable
<input type="checkbox"/> Trumpets	Serviceable
<input type="checkbox"/> Dome Plate	Serviceable
<input type="checkbox"/> Inner/Outer Rivet Bands	Serviceable
<input type="checkbox"/> Inner/Outer Liners	Serviceable
<input type="checkbox"/> 1 st Stage Nozzle	Serviceable
<input type="checkbox"/> Igniter Tube Area	Serviceable
<input type="checkbox"/> Inspect all visible fuel nozzle tips for contamination or damage from all CRF BSI ports or with flex scope	Serviceable
	Serviceable

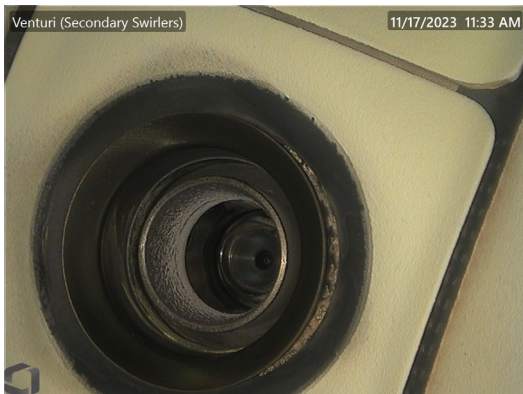
GE Proprietary Information Subject to the restrictions on the cover or first page



	Serviceable
<input type="checkbox"/> Remove 2 fuel nozzles and check outer cowl for cracks or missing material. Inspect secondary swirlers for water erosion, missing material or deposits.	Serviceable
	Serviceable



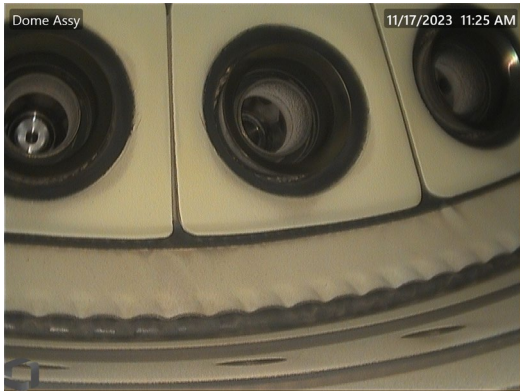
Section	Combustor
Defect	Secondary swirler
Comments	Serviceable



Section	Combustor
Defect	Secondary swirler
Comments	Serviceable



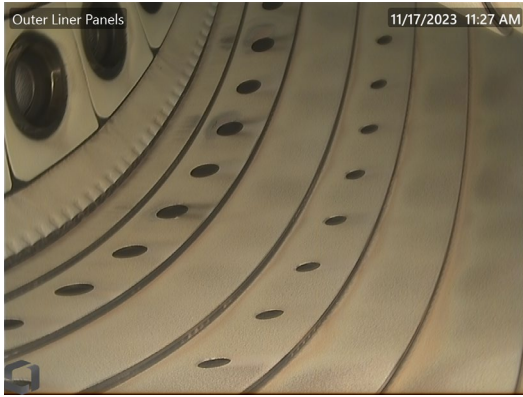
Section	Cowl
Defect	Secondary swirler
Comments	Serviceable



Section	Combustor
Defect	Dome Assy
Comments	Serviceable



Section	Combustor
Stage	Inner Liner
Defect	NO DEFECT - SERVICEABLE
Comments	



Section	Combustor
Component	Outer liner
Defect	NO DEFECT - SERVICEABLE
Comments	



Section	Combustor
Component	Primary Swirler
Defect	NO DEFECT - SERVICEABLE
Comments	



Fuel_Nozzle_001.JPG

Section	Ignitor
Defect	NO DEFECTS - SERVICEABLE
Comments	



Fuel_Nozzle_002.JPG

Section	Ignitor
Defect	NO DEFECTS - SERVICEABLE
Comments	



Fuel_Nozzle_003.JPG

Section	P4.8
Defect	NO DEFECTS - SERVICEABLE
Comments	



Fuel_Nozzle_004.JPG

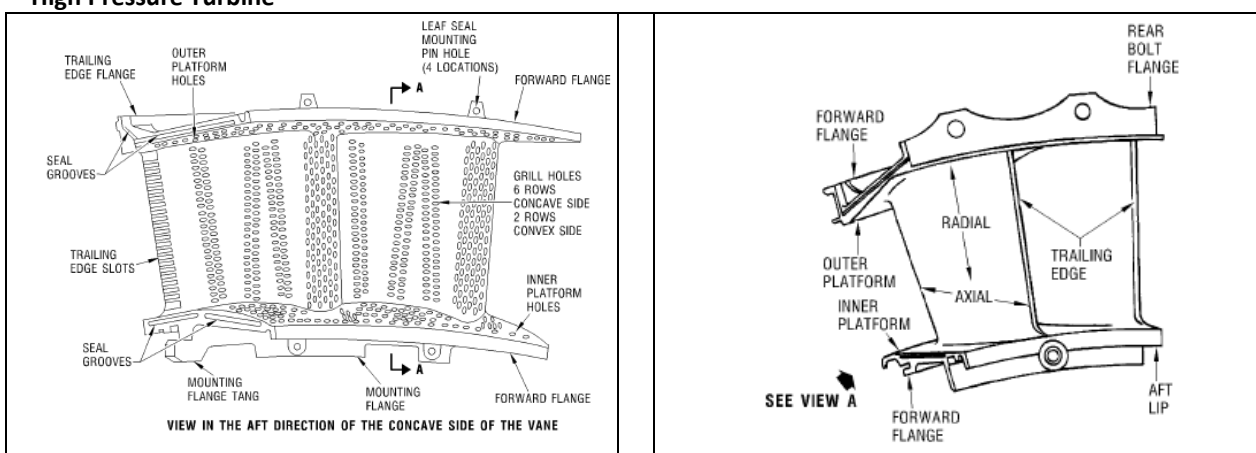
Section	Fuel Nozzle
Defect	NO DEFECTS - SERVICEABLE
Comments	



Fuel_Nozzle_005.JPG

Section	Fuel Nozzle
Defect	NO DEFECTS - SERVICEABLE
Comments	

High Pressure Turbine



High Pressure Turbine	
Inspection Area	Comment
<input type="checkbox"/> Inspect stage 1 and 2 shrouds for cracks, missing material, wear and erosion.	Excessive Oxidation and erosion
<input type="checkbox"/> Stage 1 HPT Shrouds, BSI port S7-2	Excessive Oxidation and erosion
<input type="checkbox"/> Stage 2 HPT Shrouds, BSI port P48 & T48 probe	Excessive Oxidation and erosion
<input type="checkbox"/> Inspect stage 1 and 2 blades for missing TBC coating, oxidation parent material, plugged cooling holes.	Excessive Oxidation and erosion
<input type="checkbox"/> Stage 1 HPT (Qty 80) Leading Edge, BSI port S7-1 and Trailing Edge, S7-2	Excessive Oxidation and erosion
<input type="checkbox"/> Stage 2 HPT (Qty 74) Leading Edge, BSI port S7-2 and Trailing Edge, P48 or T48 probe	Excessive Oxidation and erosion
<input type="checkbox"/> Inspect stage 1 and 2 blade airfoils for cracks, nicks, tears, burrs, dents and missing material,	Excessive Oxidation and erosion
<input type="checkbox"/> Stage 1 HPT (Qty 80) Leading Edge, BSI port S7-1 and Trailing Edge, S7-2	Excessive Oxidation and erosion
<input type="checkbox"/> Stage 2 HPT (Qty 74) Leading Edge, BSI port S7-2 and Trailing Edge, P48 or T48 probe	Excessive Oxidation and erosion
<input type="checkbox"/> Inspect the stage 1 and 2 blade platform for bowing and cracks.	
<input type="checkbox"/> Stage 1 HPT (Qty 80) platform, BSI port S7-1 and S7-2	

GE Proprietary Information Subject to the restrictions on the cover or first page



Stage 2 HPT (Qty 74) platform, BSI port S7-2 and P48 probe



HPT_Stage_1_Nozzle_LE_001.JPG

Section	HPT
Stage	Stage 1 Nozzle
Component	LE
Defect	EROSION
Comments	



HPT_Stage_1_Nozzle_LE_002.JPG

Section	HPT
Stage	Stage 1 Nozzle
Component	LE
Defect	EROSION
Comments	



HPT_Stage_1_Nozzle_LE_003.JPG

Section	HPT
Stage	Stage 1 Nozzle
Component	LE
Defect	EROSION
Comments	



HPT_Stage_1_Nozzle_TE_001.JPG

Section	HPT
Stage	Stage 1 Nozzle
Component	TE
Defect	NO DEFECTS - SERVICEABLE
Comments	



HPT_Stage_1_Blade_LE_001.JPG

Section	HPT
Stage	Stage 1 Blade
Component	LE
Defect	EROSION
Comments	



HPT_Stage_1_Blade_LE_002.JPG

Section	HPT
Stage	Stage 1 Blade
Component	LE
Defect	EROSION
Comments	



HPT_Stage_1_Blade_LE_003.JPG

Section	HPT
Stage	Stage 1 Blade
Component	LE
Defect	OXIDATION
Comments	



HPT_Stage_1_Blade_LE_004.JPG

Section	HPT
Stage	Stage 1 Blade
Component	LE
Defect	EROSION
Comments	



HPT_Stage_1_Blade_LE_005.JPG

Section	HPT
Stage	Stage 1 Blade
Component	LE
Defect	NO DEFECTS - SERVICEABLE, TE LOSS
Comments	



HPT_Stage_1_Blade_TE_001.JPG

Section	HPT
Stage	Stage 1 Blade
Component	TE
Defect	BURN
Comments	



HPT_Stage_1_Blade_TE_002.JPG

Section	HPT
Stage	Stage 1 Blade
Component	TE
Defect	NO DEFECTS - SERVICEABLE
Comments	



HPT_Stage_2_Nozzle_LE_001.JPG

Section	HPT
Stage	Stage 2 Nozzle
Component	LE
Defect	NO DEFECTS - SERVICEABLE
Comments	



HPT_Stage_2_Nozzle_LE_002.JPG

Section	HPT
Stage	Stage 2 Blade
Component	LE
Defect	OXIDATION
Comments	



HPT_Stage_2_Nozzle_LE_003.JPG

Section	HPT
Stage	Stage 2 Blade
Component	LE
Defect	EROSION
Comments	



HPT_Stage_2_Nozzle_LE_004.JPG

Section	HPT
Stage	Stage 2 Blade
Component	LE
Defect	OXIDATION
Comments	



HPT_Stage_2_Nozzle_LE_005.JPG

Section	HPT
Stage	Stage 2 Blade
Component	LE
Defect	OXIDATION
Comments	



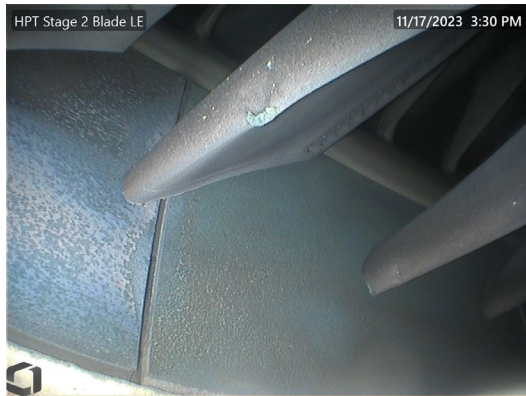
HPT_Stage_2_Nozzle_TE_001.JPG

Section	HPT
Stage	Stage 2 Nozzle
Component	TE
Defect	EROSION
Comments	



HPT_Stage_2_Nozzle_TE_002.JPG

Section	HPT
Stage	Stage 2 Nozzle
Component	TE
Defect	EROSION
Comments	



HPT_Stage_2_Blade_LE_001.JPG

Section	HPT
Stage	Stage 2 Blade
Component	LE
Defect	DENT
Comments	



HPT_Stage_2_Blade_LE_002.JPG

Section	HPT
Stage	Stage 2 Blade
Component	LE
Defect	DENT
Comments	



HPT_Stage_2_Blade_LE_003.JPG

Section	HPT
Stage	Stage 2 Blade
Component	LE
Defect	NO DEFECTS - SERVICEABLE
Comments	



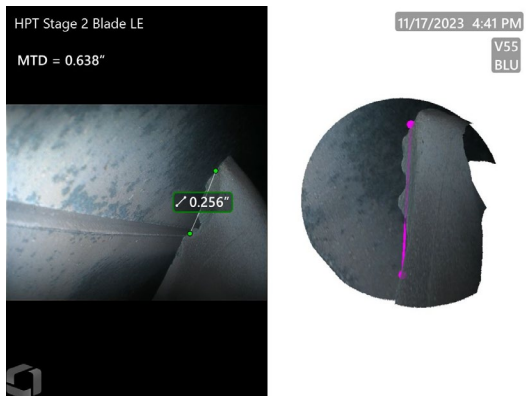
HPT_Stage_2_Blade_LE_004.JPG

Section	HPT
Stage	Stage 2 Blade
Component	LE
Defect	EROSION
Comments	



HPT_Stage_2_Blade_LE_005.JPG

Section	HPT
Stage	Stage 2 Blade
Component	LE
Defect	EROSION
Comments	



HPT_Stage_2_Blade_LE_006.JPG

Section	HPT
Stage	Stage 2 Blade
Component	LE
Length	0.256 in
Defect	OXIDATION
Comments	



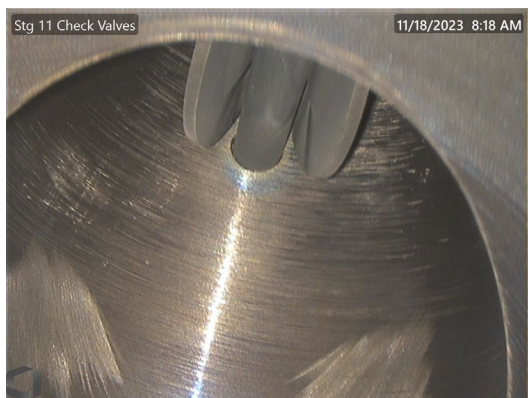
HPT_Stage_2_Blade_LE_007.JPG

Section	HPT
Stage	Stage 2 Blade
Component	LE
Defect	EROSION
Comments	



HPT_Stage_2_Blade_TE_001.JPG

Section	HPT
Stage	Stage 2 Blade
Component	TE
Defect	NO DEFECTS - SERVICEABLE
Comments	

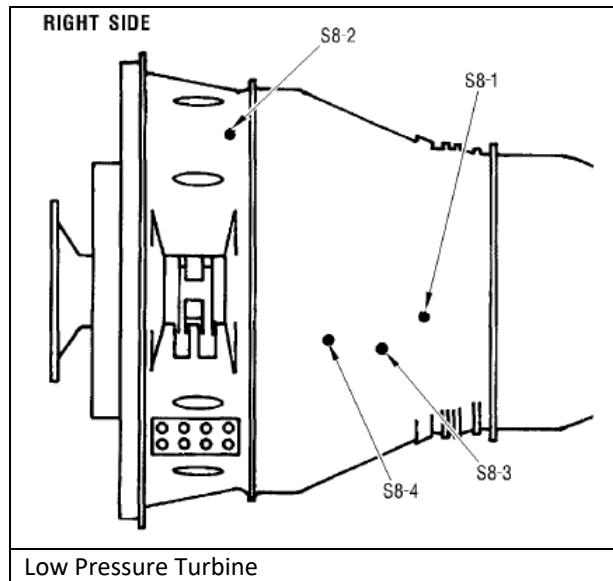


Stg_11_Check_Valves_001.JPG

Section	Stg 11 Check Valves
Defect	NO DEFECTS - SERVICEABLE
Comments	



Low Pressure Turbine BSI Ports



Low Pressure Turbine	
Inspection Area	Comment
<input type="checkbox"/> Inspect stages 1 through 5 blades and vanes for cracks, nicks, burrs, tears, curl, missing material, dents, scratches, pits.	Serviceable
<input type="checkbox"/> Stage 1 LPT Nozzle, BSI ports S8-1 & P48 probe.	Serviceable
<input type="checkbox"/> Stage 1 LPTR Blades (Qty 118) & Vanes, BSI ports S8-1 & S8-3.	Serviceable
<input type="checkbox"/> Stage 2 LPTR Blades (Qty 124) & Vanes, BSI ports S8-3.	Serviceable
<input type="checkbox"/> Stage 3 LPTR Blades (Qty 88) & Vanes, BSI ports S8-4.	Serviceable
<input type="checkbox"/> Stage 4 LPTR Blades (Qty 80) & Vanes, BSI ports S8-4.	Serviceable
<input type="checkbox"/> Stage 5 LPTR Blades (Qty 74) & Vanes, BSI ports S8-2.	Serviceable
<input type="checkbox"/> Inspect blade shroud interlocks for wear and shingling.	Serviceable
<input type="checkbox"/> Inspect for erosion, corrosion or deposits.	Serviceable



Stage_1_Blade_LE_001.JPG

Section	LPT
Stage	Stage 1 Blade
Component	LE
Defect	NO DEFECTS - SERVICEABLE
Comments	



Stage_1_Blade_LE_002.JPG

Section	LPT
Stage	Stage 1 Blade
Component	LE
Defect	NO DEFECTS - SERVICEABLE
Comments	



Stage_1_Blade_TE_001.JPG

Section	LPT
Stage	Stage 1 Blade
Component	TE
Defect	NO DEFECTS - SERVICEABLE
Comments	



Stage_1_Blade_TE_002.JPG

Section	LPT
Stage	Stage 1 Blade
Component	TE
Defect	NO DEFECTS - SERVICEABLE
Comments	



LE_001.JPG

Section	LPT
Stage	Stage 2 Blade
Component	LE
Defect	NO DEFECTS - SERVICEABLE
Comments	



LE_002.JPG

Section	LPT
Stage	Stage 2 Blade
Component	LE
Defect	NO DEFECTS - SERVICEABLE
Comments	



Stage_3_Blade_TE_001.JPG

Section	LPT
Stage	Stage 3 Blade
Component	TE
Defect	NO DEFECTS - SERVICEABLE
Comments	



Stage_3_Blade_TE_002.JPG

Section	LPT
Stage	Stage 3 Blade
Component	TE
Defect	NO DEFECTS - SERVICEABLE
Comments	



Stage_4_Blade_LE_001.JPG

Section	LPT
Stage	Stage 4 Blade
Component	LE
Defect	NO DEFECTS - SERVICEABLE
Comments	



Stage_4_Blade_LE_002.JPG

Section	LPT
Stage	Stage 4 Blade
Component	LE
Defect	NO DEFECTS - SERVICEABLE
Comments	



Stage_5_Blade_TE_001.JPG

Section	LPT
Stage	Stage 5 Blade
Component	TE
Defect	NO DEFECTS - SERVICEABLE
Comments	



Stage_5_Blade_TE_002.JPG

Section	LPT
Stage	Stage 5 Blade
Component	TE
Defect	NO DEFECTS - SERVICEABLE
Comments	