



P.O. Box 1960 • Edmond, Oklahoma 73083-1960
2701 West I-35 Frontage Road • Edmond, Oklahoma 73013
Telephone # (405) 359-2500 • Fax # (405) 359-1071 • www.ompacom
“Building a brighter future”

Specification for Replacement of the Inlet Fogging System

Subject: Inlet Fogging System

This specification will be a Turn-Key Project. In accordance we request that the bidder to supply all materials, labor, supervision, and all necessary equipment to remove and replace the inlet fogging system on our LM6000 Norway Package Unit.

The successful Bidder shall provide all Labor, Material, Equipment, and Tooling to complete the Project, according to the following:

Work	Provided by Party Responsible:
Safety Training	OMPA
LOCKOUT/TAGOUT	OMPA
Hot-work Permits	OMPA
Confined Space Permits	OMPA
Safety Oversight at Project	OMPA
Safety Harness and all Safety Gear	Bidder
Scaffolding	Bidder
Crane	Bidder
Fork Truck	Bidder
Manlift	Bidder
Material for Replacement	Bidder
Bonding Material	Bidder
Nuts, Bolts, Hardware	Bidder
Bathroom (Porta Johns)	Bidder
Washup Facility	Bidder
Dumpster and disposal of used material	Bidder
All Electrical Work needed for the project back to the Electrical Disconnect	Bidder
All Testing of new system shall be from Bidder	Bidder



P.O. Box 1960 • Edmond, Oklahoma 73083-1960
2701 West I-35 Frontage Road • Edmond, Oklahoma 73013
Telephone # (405) 359-2500 • Fax # (405) 359-1071 • www.ompa.com
"Building a brighter future"

Successful Bidder shall be required to attend OMPA Safety Training prior to work commencing on the project. All employees will be required to wear Flame Resistant Clothing (FR), Safety Boots, Hardhats, Gloves, and Safety Glasses. Outerwear such as coats and coveralls shall be FR as well.

Work Scope Requested

Inlet Fogging System

Successful Bidder shall remove the existing inlet fogging system and install a new inlet fogging system on our LM6000 Norway Package Unit. The new system will be placed in the same location as the existing system, and the existing internal piping should be used as much as possible. The system shall be integrated with our digital control system and have a hand off auto feature. The successful bidder shall perform a full function test and provide system training to OMPA personnel. See below for drawings and pictures of the existing system.

NOTES:

1. Power – 480 volts, 60Hz, 3 phase
 2. Breaker – 90 Amps
 3. Control Power – 120 volts
 4. Existing skid dimensions – 63" length, 43" wide, and 79" height
 5. Inlet pipe – 1" stainless steel, quantity of 1
 6. Outlet pipe – 1" stainless steel, quantity of 1
 7. Tube size – ½" stainless steel, quantity of 5
 8. Water supply – demineralized water
 9. DCS – Woodward
-
- Freight charges should be included in the bid.
 - OMPA is a State Agency and is Tax-Exempt Entity. No tax is to be charged to OMPA. OMPA has and will provide upon award a valid Tax-Exemption Certificate.
 - Your work weeks to complete the job are based on the hours the successful bidder deems needed to complete defined work. OMPA will assume no additional hours unless agreed to in a Change Order.
 - Change Orders: Changes, Increases, or reduction in the overall proposed scope of work may require a revision in pricing and will require a Change Order by OMPA. At no time will additional pricing be paid unless a change order has been issued and approved in advance of the work. The Plant Manager David W. Huff and the OMPA General Manager must agree prior to any change order.
 - This project is Turn-Key with Firm Pricing.

All work shall be warranted for one full year following completion of the project.

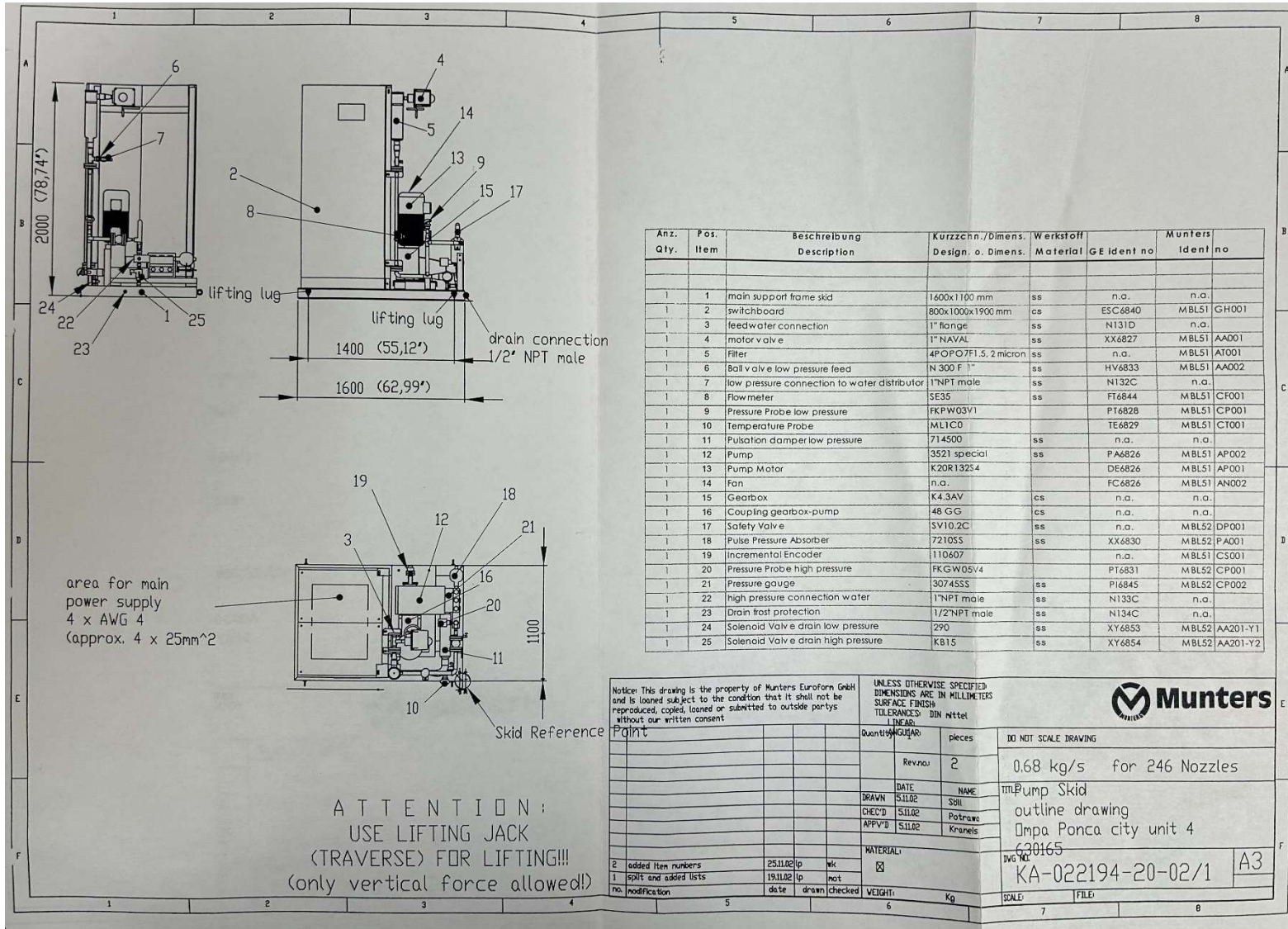


P.O. Box 1960 • Edmond, Oklahoma 73083-1960
2701 West I-35 Frontage Road • Edmond, Oklahoma 73013
Telephone # (405) 359-2500 • Fax # (405) 359-1071 • www.ompacom
"Building a brighter future"





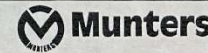
P.O. Box 1960 • Edmond, Oklahoma 73083-1960
 2701 West I-35 Frontage Road • Edmond, Oklahoma 73013
 Telephone # (405) 359-2500 • Fax # (405) 359-1071 • www.ompacom
 "Building a brighter future"



Anz. Qty.	Pos. Item	Beschreibung Description	Kurzzeichn./Dimens. Design. o. Dimens.	Werkstoff Material	GE Ident no	Munters Ident no
1	1	main support frame skid	1600x1100 mm	ss	n.a.	n.a.
1	2	switchboard	800x1000x1900 mm	cs	ESC6840	MBL51 GH001
1	3	feedwater connection	1" flange	ss	N131D	n.a.
1	4	motor valve	1" NAVAL	ss	XX6827	MBL51 AA001
1	5	Filter	4POPO7F1.5. 2 micron	ss	n.a.	MBL51 AT001
1	6	Ball valve low pressure feed	N 300 F 1"	ss	HV6833	MBL51 AA002
1	7	low pressure connection to water distributor	1"NPT male	ss	N132C	n.a.
1	8	Flowmeter	SE35	ss	FT6844	MBL51 CF001
1	9	Pressure Probe low pressure	FKPW03V1	ss	PT6828	MBL51 CP001
1	10	Temperature Probe	ML1C0	ss	TE6829	MBL51 CT001
1	11	Pulsation damper low pressure	714500	ss	n.a.	n.a.
1	12	Pump	3521 special	ss	PA6826	MBL51 AP002
1	13	Pump Motor	K20R13254	ss	DE6826	MBL51 AP001
1	14	Fan	n.a.	ss	FC6826	MBL51 AN002
1	15	Gearbox	K4.3AV	cs	n.a.	n.a.
1	16	Coupling gearbox-pump	48 GG	cs	n.a.	n.a.
1	17	Safety Valve	SV10.2C	ss	n.a.	MBL52 DP001
1	18	Pulse Pressure Absorber	721055	ss	XX6830	MBL52 PA001
1	19	Incremental Encoder	110607	n.a.	n.a.	MBL51 CS001
1	20	Pressure Probe high pressure	FKGW05V4	ss	PT6831	MBL52 CP001
1	21	Pressure gauge	307455S	ss	PI6845	MBL52 CP002
1	22	high pressure connection water	1"NPT male	ss	N133C	n.a.
1	23	Drain frost protection	1/2"NPT male	ss	N134C	n.a.
1	24	Solenoid Valve drain low pressure	290	ss	XY6853	MBL52 AA201-Y1
1	25	Solenoid Valve drain high pressure	KB15	ss	XY6854	MBL52 AA201-Y2

Notice: This drawing is the property of Munters EuroForm GmbH and is loaned subject to the condition that it shall not be reproduced, copied, loaned or submitted to outside parties without our written consent.

UNLESS OTHERWISE SPECIFIED DIMENSIONS ARE IN MILLIMETERS SURFACE FINISH: TOLERANCES: DIN mittel LINEAR



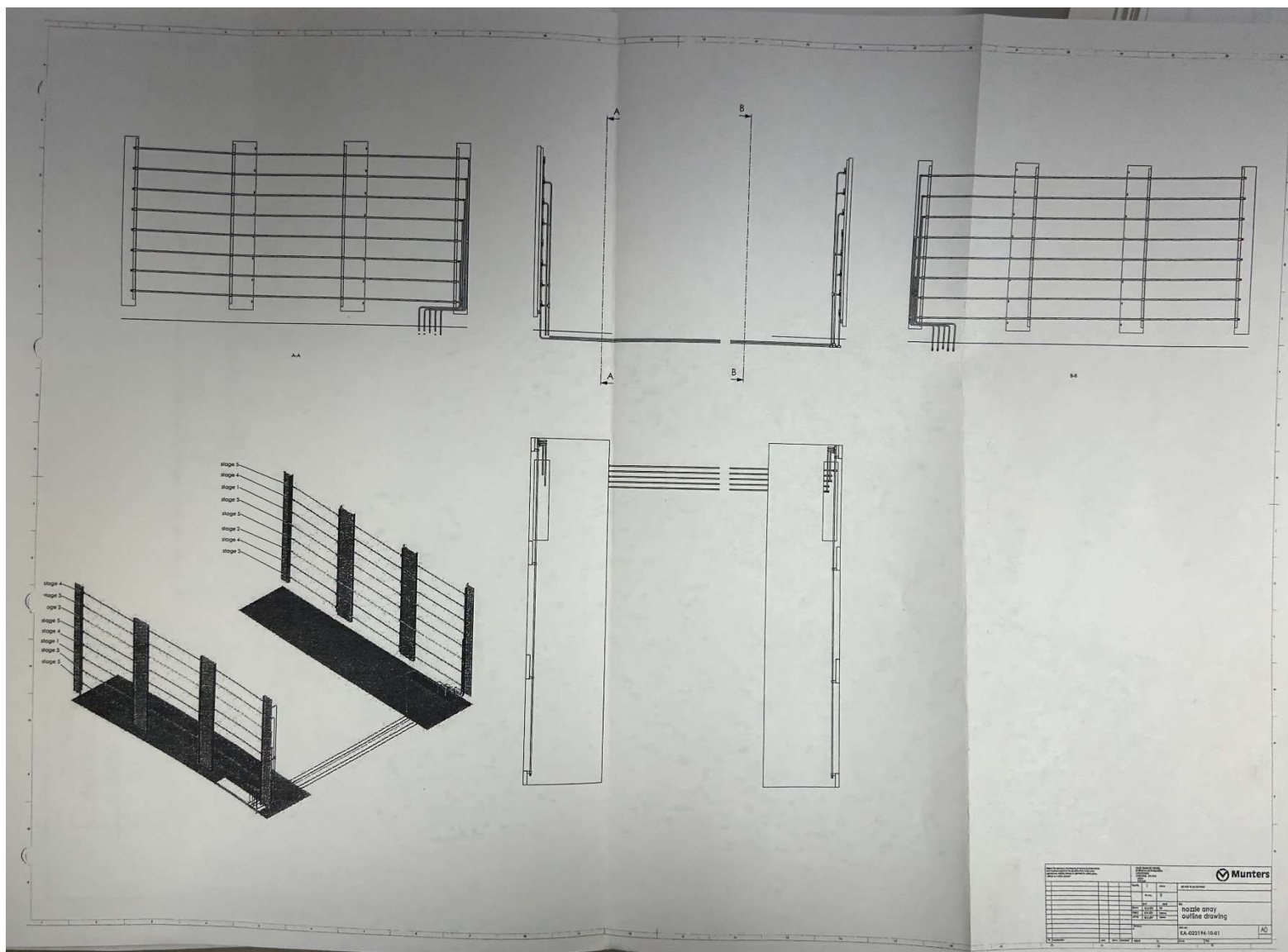
Quantity	2	pieces	DO NOT SCALE DRAWING
Revno	2		0,68 kg/s for 246 Nozzles
DATE	5.11.02	NAME	SSIL
DRAWN	5.11.02	Potras	
CHECK'D	5.11.02	Krunels	
APPR'D	5.11.02		
MATERIAL:		MATERIAL:	
2 added item numbers	25.11.02 lp wk	DATE: 5.11.02	
1 split and added lists	19.11.02 lp not	DATE: 5.11.02	
no. modification	date	drawn	checked
WEIGHT:		Kg	
SCALE:		FILE:	

ATTENTION :
 USE LIFTING JACK
 (TRAVERSE) FOR LIFTING!!!
 (only vertical force allowed!)

KA-022194-20-02/1
 630165
 A3



P.O. Box 1960 • Edmond, Oklahoma 73083-1960
2701 West I-35 Frontage Road • Edmond, Oklahoma 73013
Telephone # (405) 359-2500 • Fax # (405) 359-1071 • www.ompa.com
"Building a brighter future"



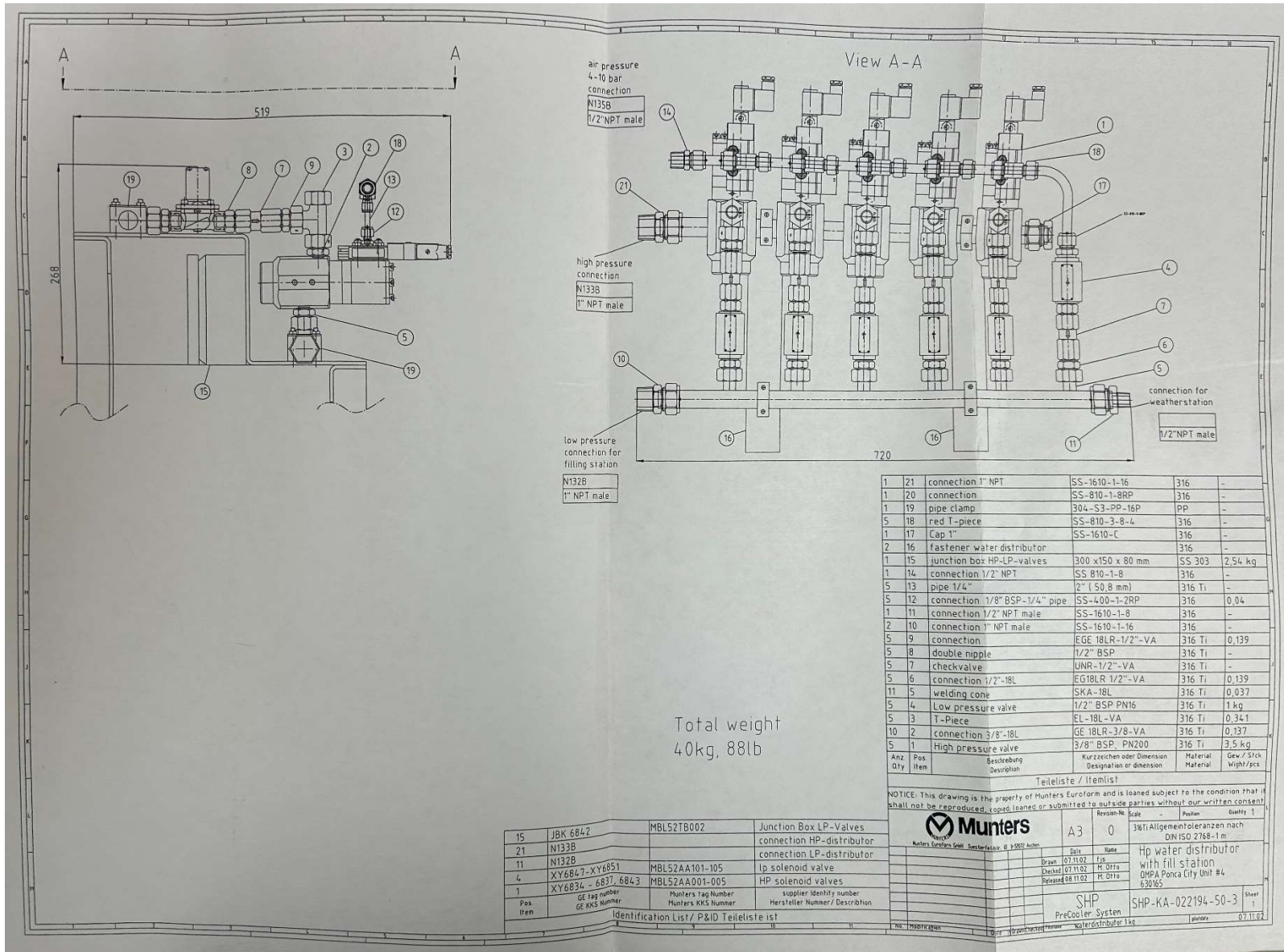


P.O. Box 1960 • Edmond, Oklahoma 73083-1960
2701 West I-35 Frontage Road • Edmond, Oklahoma 73013
Telephone # (405) 359-2500 • Fax # (405) 359-1071 • www.ompa.com
"Building a brighter future"





P.O. Box 1960 • Edmond, Oklahoma 73083-1960
 2701 West I-35 Frontage Road • Edmond, Oklahoma 73013
 Telephone # (405) 359-2500 • Fax # (405) 359-1071 • www.ompa.com
 "Building a brighter future"





P.O. Box 1960 • Edmond, Oklahoma 73083-1960
 2701 West I-35 Frontage Road • Edmond, Oklahoma 73013
 Telephone # (405) 359-2500 • Fax # (405) 359-1071 • www.ompa.com
"Building a brighter future"

DOUBLE FRONT

NOTES:

- UL LABELS REQUIRED
- WIRE TO MEET UL-W-1
- FURNISH STANDARD CAPACITY CPT'S
- ALL CABLES ENTER FROM TOP

REFERENCE DRAWING:
60-010 SHT. 2, & 3 MCC ONE LINE

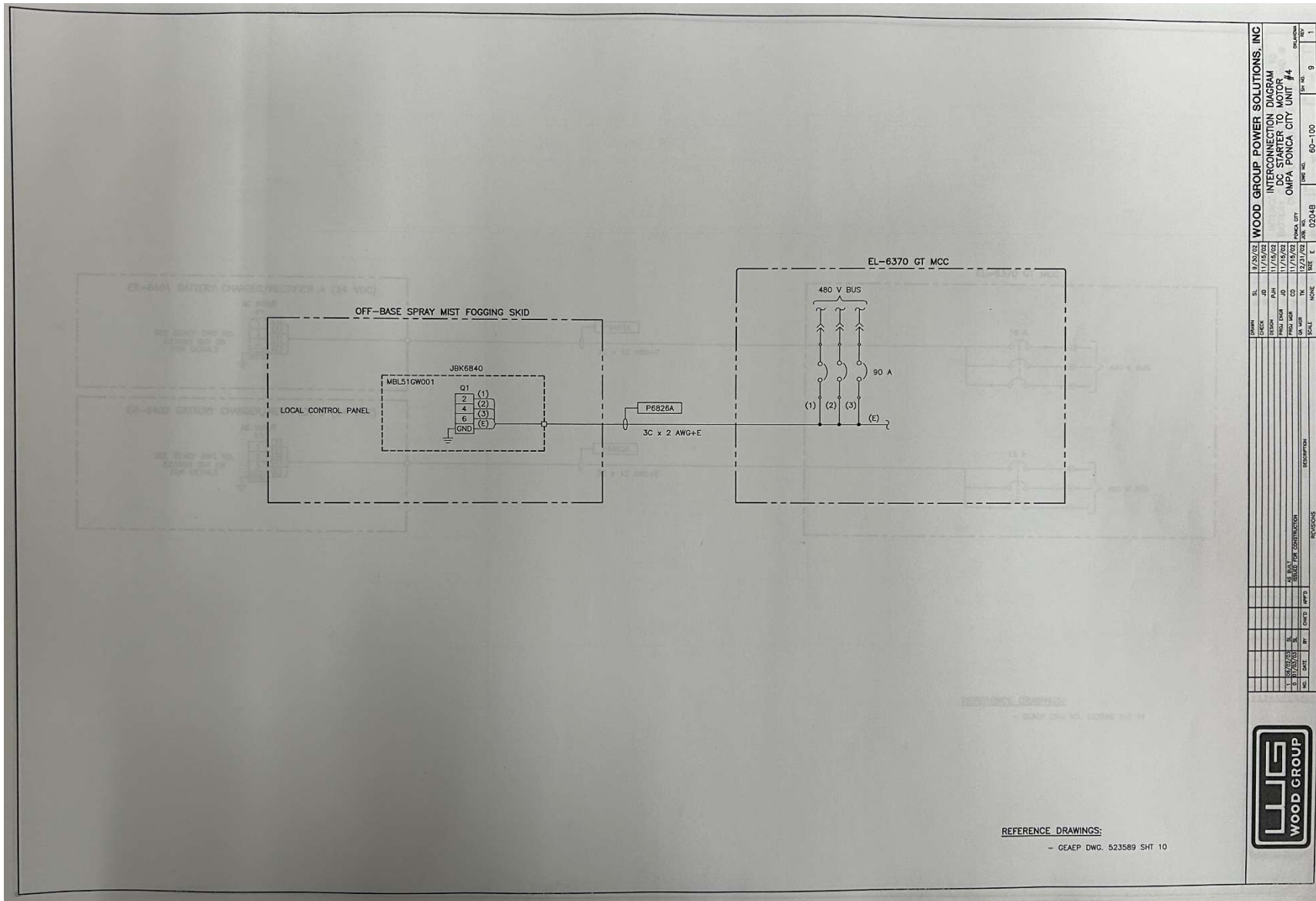
UNIT NO	ALPHA	NAME TYPICAL 3/16" HIGH LETTERS - 20 SPACES PER LINE			TYPE	NEMA SIZE	HORSE POWER	SERIES	RPM	FLA	KW	CPT (VA)	FUSED DISCONNECT OR CIRCUIT BREAKER		EXTRA INTERLOCKS		DOOR OR PILOT DEVICE PANEL MOUNTED ACCESSORIES		LEGEND	COLOR	REMARKS	
		BRK FRAME	CLIP RATING	FUSE/ZIP									AUXILIARY DEVICES	NO	MC	FOR SEL						
1F	A	INCOMING LINE (FRONT)																			1000 A INCOMING LINE	
1F	G	TURBINE HYDRAULIC PUMP																				600 A BUS TIE (FRONT)
2F	A	BUS TIE BREAKER (FRONT)																				
2F	D	SPACES																				
3F	A	G.T. ENCLOSURE																				
3F	G	G.T. ENCLOSURE																				
4F	A	WATER INJECTION PUMP																				
4F	E-L	WELDING RECEPTACLE																				
4F	E-R	AUXILIARY POWER FEEDER																				
4F	G-L	WELDING RECEPTACLE																				
4F	G-R	(BLANK) SPARE																				
4F	I-L	BUILDING LIGHTING PANEL																				
4F	I-R	BUILDING HVAC																				
4F	K-L	(BLANK) SPARE																				
4F	K-R	FOGGING SYSTEM																				
5F	A-L	24 VDC BATTERY																				
5F	A-R	24 VDC BATTERY																				
5F	C-L	24 VDC BATTERY																				
5F	C-R	125 VDC BATTERY																				
5F	E	GENERATOR HEATER																				
5F	G	MINERAL LUBE OIL TANK HEATER																				
5F	H	BUILDING AUXILIARY POWER																				
5F	K	SPARE																				
5R	A	GENERATOR THERMAL SKIRT HEATER																				
5R	C	HYDRAULIC LO TANK HEATER																				
5R	E	GENERATOR SPACE HEATER																				
5R	G	WASTE OIL TRANSFER PUMP																				
5R	I	SPRINT WATER INJECTION PUMP																				
5R	K	AREA LIGHTING																				
4R	A	GENERATOR JACKING OIL PUMP																				
4R	C	MINERAL LUBE OIL EXTRACTION FAN																				
4R	E	GENERATOR SPACE HEATER																				
4R	G	GENERATOR SPACE HEATER																				
4R	I	WATER INJECTION SKID HEATER/BLOWER																				
4R	K	FUEL COMPARTMENT VENT FAN																				
3R	A	SPARE																				
3R	C	MINERAL LUBE OIL PUMP																				
3R	E	MINERAL LUBE OIL PUMP																				
3R	G	HYDRAULIC COOLING UNIT FAN																				
3R	I	GENERATOR VENT FAN A																				
3R	K	GENERATOR VENT FAN B																				
2R	A	BUS TIE BREAKER (REAR)																				
2R	D	TRANSFORMER CB																				
2R	F	LIGHTING PANEL																				
1R	A	INCOMING LINE (REAR)																				
1R	G	SPARE																				
1R	I	ONLY WATER SEPARATOR																				
1R	L	SPARE																				
1R	K-R	COMPRESSOR WATER WASH FEEDER																				

WOOD GROUP POWER SOLUTIONS, INC.
 MOTOR CONTROL CENTER ARRANGEMENT
 OMPA PONCA CITY UNIT #4

DATE	12/27/02	BY	WLS
DESIGN	12/17/02	BY	WLS
REVISION	12/17/02	BY	WLS
REVISION	12/17/02	BY	WLS
REVISION	12/17/02	BY	WLS



P.O. Box 1960 • Edmond, Oklahoma 73083-1960
 2701 West I-35 Frontage Road • Edmond, Oklahoma 73013
 Telephone # (405) 359-2500 • Fax # (405) 359-1071 • www.ompac.com
 "Building a brighter future"



REV	DATE	BY	CHKD	DESCRIPTION
1	11/12/02	EL	EL	REVISION
2	11/12/02	EL	EL	REVISION
3	11/12/02	EL	EL	REVISION
4	11/12/02	EL	EL	REVISION
5	11/12/02	EL	EL	REVISION
6	11/12/02	EL	EL	REVISION
7	11/12/02	EL	EL	REVISION
8	11/12/02	EL	EL	REVISION
9	11/12/02	EL	EL	REVISION
10	11/12/02	EL	EL	REVISION

WOOD GROUP POWER SOLUTIONS, INC.
 INTERCONNECTION DIAGRAM
 DC STARTER TO MOTOR
 OMPA, PONCA CITY UNIT #4
 PAPER NO. 60-100
 SHEET NO. 9
 OF 11

REFERENCE DRAWINGS:
 - GEAEF DWG. 523589 SHT 10

