

# Oklahoma Municipal Power Authority

More information about any of the Oklahoma Municipal Power Authority's programs and services can be found on OMPA's website at [www.ompa.com](http://www.ompa.com). OMPA Member Services staff can be contacted at 405-359-2500, or you can send them an email:

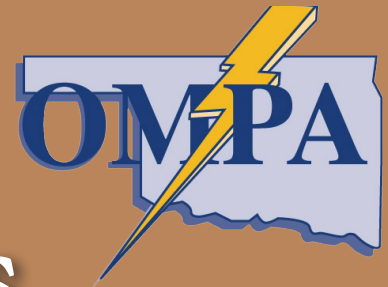
<b>Jennifer Rogers</b>	<b>Manager of Member Services</b>	<b><a href="mailto:jrogers@ompa.com">jrogers@ompa.com</a></b>
<b>Brandy Banks</b>	<b>Support Services Specialist</b>	<b><a href="mailto:bbanks@ompa.com">bbanks@ompa.com</a></b>
<b>Palma Lough</b>	<b>Member Relations and Training</b>	<b><a href="mailto:plough@ompa.com">plough@ompa.com</a></b>
<b>Ryan Piersol</b>	<b>Media Specialist</b>	<b><a href="mailto:rpiersol@ompa.com">rpiersol@ompa.com</a></b>
<b>Mike Hensley</b>	<b>Distribution Planning Engineer</b>	<b><a href="mailto:mhensley@ompa.com">mhensley@ompa.com</a></b>
<b>Sean West</b>	<b>Energy Services Technician</b>	<b><a href="mailto:swest@ompa.com">swest@ompa.com</a></b>
<b>Steve Mathena</b>	<b>Energy Services Auditor</b>	<b><a href="mailto:kwalker@ompa.com">kwalker@ompa.com</a></b>



## Member Cities

Altus Municipal Authority	New Cordell Utility Authority
Blackwell Municipal Authority	Newkirk Municipal Authority
Comanche Public Works Authority	Okeene Public Works Authority
Copan Public Works Authority	Olustee Public Works Authority
Duncan Public Works Authority	Orlando Public Works Authority
Edmond Public Works Authority	Pawhuska Public Works Authority
Eldorado Public Works Authority	Perry Municipal Authority
Fairview Utilities Authority	Ponca City Utility Authority
Fort Supply Utility Authority	Pond Creek Public Works Authority
Frederick Public Works Authority	Prague Public Works Authority
Geary Utilities Authority	Purcell Public Works Authority
Goltry Public Works Authority	Ryan Utilities Authority
Granite Public Works Authority	Spiro Municipal Improvement Authority
Hominy Public Works Authority	Tecumseh Utility Authority
Kingfisher Public Works Authority	Tonkawa Municipal Authority
Laverne Public Works Authority	Walters Public Works Authority
Lexington Public Works Authority	Watonga Public Works Authority
Mangum Utilities Authority	Waynoka Utilities Authority
Manitou Public Works Authority	Wetumka Utilities Authority
Marlow Municipal Authority	Wynnewood City Utilities Authority
Mooreland Municipal Authority	Yale Water and Sewer Trust

# Programs and Services



Oklahoma Municipal Power Authority  
2701 West I-35 Frontage Road  
Edmond, Oklahoma 73083-1960



Printed at no cost to the taxpayers of Oklahoma. 250 copies of this publication have been issued by OMPA at a cost of \$317.19.

2701 West I-35 Frontage Road, Post Office Box 1960,  
Edmond, Oklahoma 73013  
Phone: 405-359-2500 - Fax: 405-359-1071

## Programs and Services Available

Since 1985, the Oklahoma Municipal Power Authority (OMPA) has been providing its member cities with wholesale power and value-added programs.

A variety of resources are also offered that can be loaned to member cities. OMPA staff is available to assist cities with the implementation of any of

the programs and services listed.

The services and programs offered by OMPA include:

- Competitive Utility Program (CUP)
- Customer Programs
- Utility Services
- Utility Marketing
- Utility Operations

## Competitive Utility Program

CUP is a voluntary program that provides OMPA member cities with a way to evaluate and improve the operation of their municipal electric

utilities.

CUP provides two types of reward – recognition in the form of certification as a competitive utility and financial awards.



Above, OMPA General Manager Dave Osburn presents a \$20,000 check to the town of Granite. The financial reward came after the town became re-certified in OMPA's Competitive Utility Program (CUP).

## Resources

### Infrared Camera

Device that forms an image using infrared radiation; can be used to detect energy loss or faulty electrical equipment.

### Light Meter

Device used to measure the amount of light in foot candles or lux for four lighting types.

### Light Meter Comparator

Compares the amount of electricity used by an incandescent bulb, CFL and LED lamps.

### Milsoft Software Keys

Outage management software.

### Owl Costume

The Hal the WISE Owl costume can be worn at community events to promote energy efficiency and/or electrical safety

### Pop-Up Canopy

A 10' x 10' cloth tent that can be used outdoors and indoors.

### Power Quality Meters

Voltage recorders either 3-phase or 1-phase with power factor and harmonic measurements included.



Devices that can be borrowed and prove useful to cities include, at left, the infrared camera and, at right, a power quality meter.





## Resources

OMPA has the following resources available for loan to our members:

### Ammeter

Measures amperes, or electric current in a circuit

### Blower Door

Measures the air tightness of small to medium-size buildings.

### DVDs and VHS Tapes

Available on a variety of subjects, including energy efficiency and customer service, as well as VCR and

OMPA's pop-up display can be used for events designed to promote public power. DVD players.

### Electrical Safety DVDs

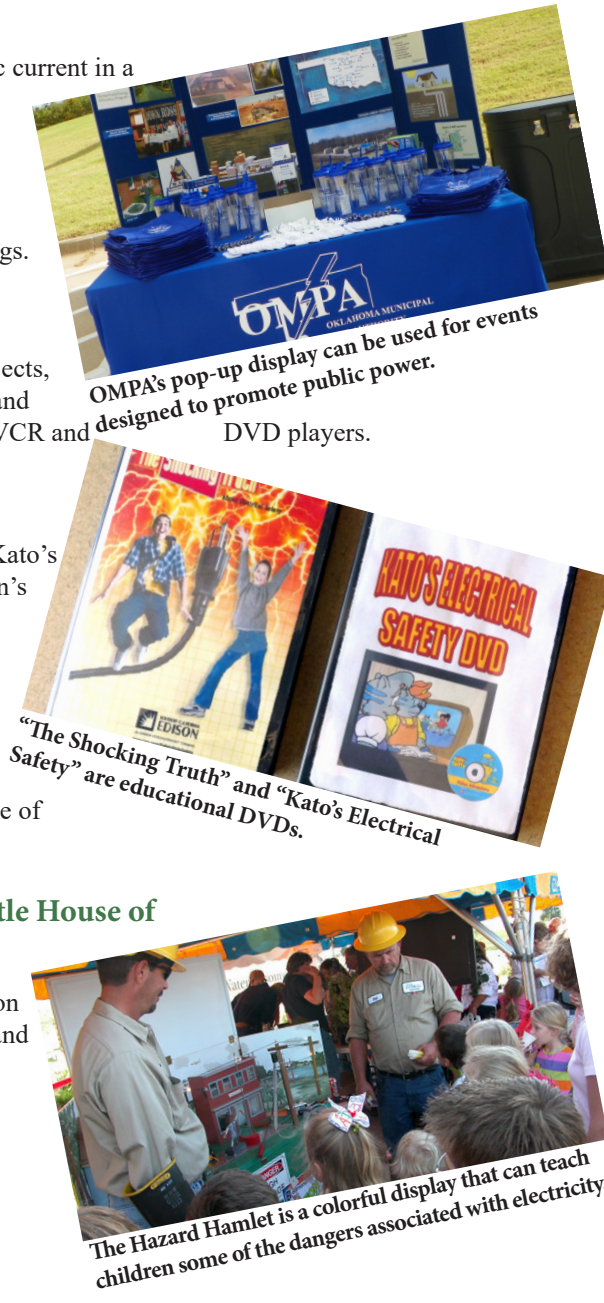
"The Shocking Truth" and "Kato's Electrical Safety" are children's electrical safety videos.

### Ground Resistance Tester

Measures ground rod and grid resistance without the use of auxiliary ground rods.

### Hazard Hamlet and Little House of Hazards

Electrical safety demonstration equipment to use in schools and community events.



The Hazard Hamlet is a colorful display that can teach children some of the dangers associated with electricity.

## Customer Programs

### Demand and Energy Efficiency Program

DEEP provides rebates to commercial and industrial customers in our member cities who implement energy-saving measures that will reduce their summer peak electric demands. Projects are evaluated on a case-by-case basis. Funds available for individual projects are determined through submission of detailed project plans.



Demand and Energy Efficiency Program

### Economic Development Rate

This rate provides assistance to commercial customers with new or added loads of 100 kW or greater and helps cities with their economic development efforts by giving a graduated discount on demand costs. The program also includes public and private schools and governmental facilities.

### Energy Efficient Surveys

Residential Energy Efficient Surveys help residential customers understand how their homes use energy, and help them identify opportunities for energy savings. This saves money for both the customers and the utility, and establishes the city utility as an energy expert and a trusted source for energy information. These surveys include blower door tests and are free to member city customers. OMPA has available an energy services technician who can conduct energy efficient surveys.

Commercial Energy Surveys are available upon request.

### WISE Rebate Program

These rebate programs encourage the installation of high-efficiency heat pumps and ceiling insulation. Cities provide rebates to the customers, and then OMPA reimburses the city for half of the rebate amount.





The Oklahoma Municipal Power Authority owns 49.2 megawatts of wind generation from the 300-megawatt Canadian Hills Wind Farm, located near El Reno, Oklahoma.

## Customer Programs

### Key Accounts

OMPA assists our member cities in implementing a Key Accounts Program, in which key customers are identified and provided with appropriate care and attention. This helps cities develop closer relationships with their key customers. Key account training is also available from OMPA.

### Wind Energy

Through this program, a source of pollution-free power is available to communities and their customers. Member cities can purchase wind-generated electricity in blocks of 5 megawatts and then sell them to their customers at rates determined by the city.

### Power Partners



Power Partners is a joint purchasing program for electric utility materials available through OMPA and YourGovShop. By pooling purchases of specific electrical items for distribution systems, member cities can lower their costs. Suppliers are asked to submit bids for materials that are then evaluated for the best price. In addition to electrical supplies, other materials also can be ordered through Power Partners.

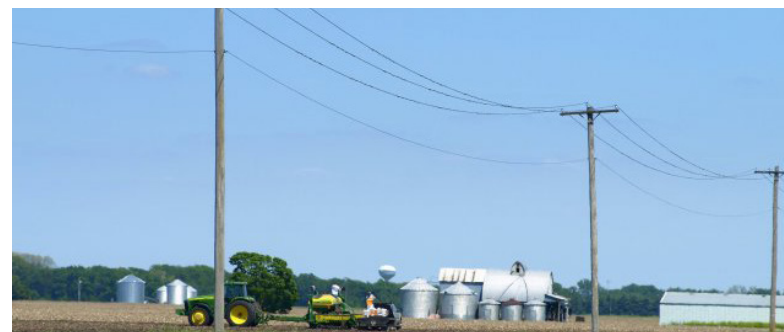
### Service Reliability

This program helps identify ways to improve the municipal electric distribution system by tracking outages. The aim of this program is threefold: 1) give the utility more information about the status and operation of the electric system; 2) use this information for planning, prioritizing and budgeting long-term improvements in the utility's maintenance and operating practices, as well as capital additions; and 3) monitor the effectiveness of improvement initiatives, by providing a benchmark which may be compared across time and across utility systems. Software is available from OMPA, which can be used to record electric system outages, calculate reliability statistics in the form of nationally recognized reliability indexes, and print monthly reports in the form of tables and graphs. APPA has cloud-based software that will do the same, and also show the estimated costs due to outages.

### System Maintenance Plan

The System Maintenance Plan provides guidance for the upkeep of the electric distribution system. The plan should be updated annually and contain descriptions of routine maintenance along with both short-term and long-term goals. The plan also generally includes a physical description, map of the system and an implementation schedule. An updated system maintenance plan can be of great benefit to the city and its electric utility during the budgeting process. Cost of updates and maintenance activities are more easily explained and justified with the plan. OMPA can help with creating a written plan.

Having a maintenance plan put in place can help utilities in the event of a disaster or unplanned outage.



## Utility Operations

### Automated Meter Reading (AMR)

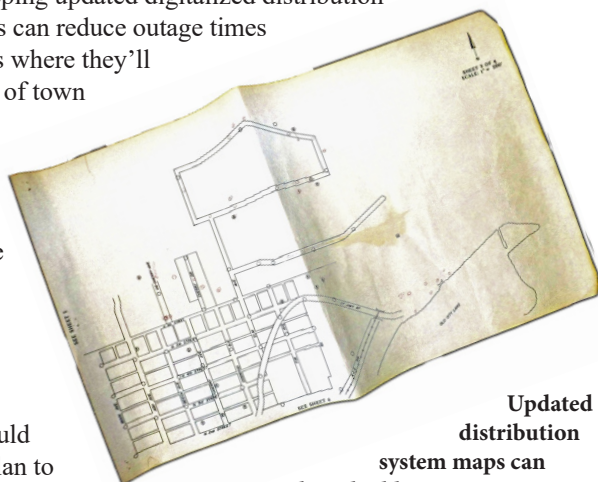
This program allows the utility to remotely read virtually any electric, water or gas meter, which leads to improved accuracy and efficiency of meter reading. It also helps utilities to provide better customer service and a variety of different rate options. OMPA will help member cities in their efforts in implementing an AMR system.

### Distribution Engineering

OMPA provides limited engineering services to member cities in the areas of municipal distribution planning and technical assistance on improvements to distribution systems. This includes evaluations of the municipal electric distribution systems and recommendations for improvement.

### Distribution System Map Updates

OMPA assists members in keeping updated digitalized distribution system maps. Up-to-date maps can reduce outage times by showing out-of-town crews where they'll be working, and how that part of town is connected to the electrical system. A map can also be useful when dealing with FEMA (after a major emergency) when showing the damaged areas of town.



**Updated distribution system maps can be valuable to cities in helping reduce outage times and when dealing with the Federal Emergency Management Agency.**

### Emergency Action Plan

Every member of a municipal electric utility department should be familiar with the utility's plan to deal with the wide range of possible situations involving emergencies with electrical equipment, utility-related electrical hazards and outages. OMPA can assist cities with drawing up their plans. OMPA also helps in major storm restoration by coordinating mutual aid.

## Utility Services

### All-Employee Training

All-Employee Training is one of several OMPA-sponsored professional development training opportunities. This special customer service training program is held every year. A professional speaker is hired by OMPA to conduct regional sessions so that cities may send as many employees as possible. Topics are typically based on customer service or personal development.

### Customer Service Training

OMPA staff conducts customer service training sessions. Other training is available upon request and there is a list of topics covered on the OMPA website.

### Customer Satisfaction Surveys

OMPA contracts with a professional company to conduct a survey of all member cities every two years. In addition, OMPA staff will help cities conduct their own survey.

### Payment Options

OMPA staff will help member cities with setting up various payment options for their customers.

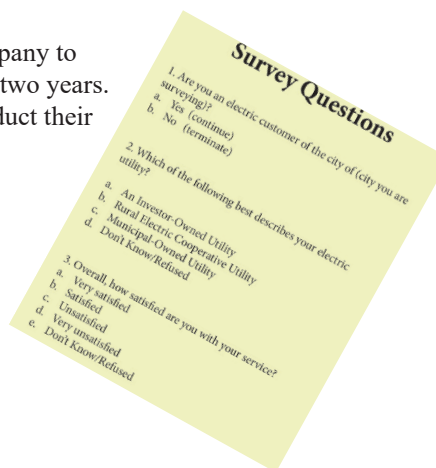
These include:

- Average Monthly Payments (AMP)
- Bank Draft
- Credit Cards
- Electronic Bill Presentment/Payments
- Pick-A-Date

### Utility Rate Analysis

OMPA's rate-analysis services offer the following:

- Rate design recommendations for incentive rates to be offered by members to their industrial and educational customers.
- Assistance in identifying the cost of providing electrical service.
- Information on the city utility's competitive position within the region and state for residential, commercial and industrial rates.
- Assistance in long-term planning as it relates to rates and future capital requirements in the electric system.





## Utility Marketing

### Light-Emitting Diode Lamps (LEDs)

Through OMPA, member cities are able to purchase energy-efficient lamps (LEDs) at a discounted price for distribution to their customers. This program also helps to educate customers on energy efficiency.

### Current Events

The *Current Events* quarterly newsletter promotes energy services programs and/or other community specific items of interest to the member's customers. Since OMPA aggregates the production of the newsletters, participating cities save on printing costs. OMPA also arranges mailing to customers for those cities that want to use this option.

### Electrical Safety

OMPA believes it is important to educate children and adults about electrical safety. Member cities can provide safety demonstrations at grade schools, city and/or utility open houses and local community events. Demonstration equipment and DVDs for safety presentations are available on loan from OMPA.



The Oklahoma Municipal Power Authority has a number of resources available to help teach children about the dangers associated with electricity. Some of these resources include interactive displays available for presentations at schools and open houses, as well as professionally produced DVDs.

### Peak Alerts

This program provides a low-cost approach to peak shaving. Since some of the monthly costs of electricity to the cities are based on the peak use in the past 12-month period, cities can lower their costs by using a peak-alerts program. OMPA staff will help member cities set up their program and has some resources available to use, such as newspaper ads, etc.

### Social Media

OMPA has a presence on Facebook, Twitter, YouTube and LinkedIn in order to reach a broader audience regarding programs, services and outage information.

OMPA encourages member cities to have a presence on social media and provides assistance in setting up a social media site or developing a policy regarding social media.

### Matching Advertising Funds

The Matching Advertising Funds Program assists member cities in promoting the benefits of public power and the utility's various services to their customers. OMPA will pay half of the cost of qualifying advertising and/or promotional products up to a pre-determined amount per city.

## Utility Authority Programs Call 888-2222

### Free Residential Energy Audits

Oklahoma Municipal Power Authority, Mangum's wholesale power supplier, offers residential energy audits to residential electric customers for free, as a way to help them save energy.

#### Audits include:

- Blower door tests
- Ceiling insulation checks
- Window condition evaluations
- Heating and cooling system inspections
- Home measurements
- A report on the Estimated Natural Infiltration Rate



### Demand and Energy Efficiency Program

Ask your utility representative about the Demand and Energy Efficiency Program (DEEP) that offers commercial and industrial customers rebates for improving energy efficiency and lowering peak demands during the summer.

Any project may qualify where electric equipment will be replaced with higher-efficiency electric equipment that has a lower energy demand.

Opportunities for DEEP projects may exist in areas such as lighting, HVAC, refrigeration, commercial food and more.

### W.I.S.E. Loan Program

Need money to pay for home energy efficiency improvements? Look no further than your community-owned electric utility.

With a W.I.S.E. Loan, it's easy to finance high-efficiency heat pump systems and other qualifying energy efficiency improvements.

#### Benefits of the W.I.S.E. Loan Program include:

- Below-market rates
- No down payment
- Quick application turnaround
- A fixed rate for the life of the loan

[www.cityofmangum.com](http://www.cityofmangum.com)  
[www.ompacom](http://www.ompacom)



OMPA provides matching advertising funds to help cities promote the benefits of public power and various programs offered.